

Guess What? Household Objects



Guess What? Leaves



Alder



Ash



Beech



Sycamore



Field Maple



Oak



Birch



Horse Chestnut



Rowan

Guess What? Creatures made by children during lockdown

Armadillo



Cat



Chameleon



Caterpillar



Fish



Dolphin



Elephant



Butterfly



Fox



Frog



Mallard duck



Hippo



Pig



Sloth



Rhino



Sheep



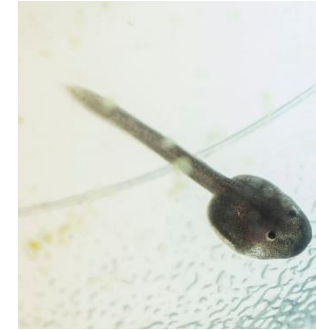
Owl



Kangaroo



Guess What? Animals



Guess What? Materials

| | | | | | |
|--------------|----------------|---------------|---------------|--------------|------------------|
| Gold | Plastic | Rubber | Glass | Water | Aluminium |
| Paper | Cork | Salt | Cotton | Wax | Cardboard |
| Lycra | Bone | Copper | Oil | Clay | Bronze |
| Sugar | Wood | Wool | Brass | Brick | Flour |

Guess What?

Another way to play ...

Pairs of children collect two matching sets of objects (~8-20), arranged on trays or plates. Each child chooses an object from the selection on their tray without revealing what they have chosen.

Each child takes it in turns to ask yes/no questions. As objects are ruled out, children can cover them up or remove them from their tray. The first child to correctly identify which object their partner has chosen is the winner!



What makes a good question?

The questions have to be ones that you can answer 'yes' or 'no' to.

Think about what the objects look like. For example:

- Is it green?
- Does it have petals?
- Is it wet?

Think about what the objects feel like. For example:

- It is hard?
- Is it heavy?
- Is it spikey?

Think about whether the objects are natural or human-made. For example:

- Is it alive?
- Can you eat it?
- Was it made by humans?

